

# KOHLER® Faucets

Wall-mount faucet trim w/Insight™ technology, no valve

**Purist®**  
**K-T11841**

## Features

- 0.5 gal/min (1.9 l/min) flow rate.
- This is trim set only. It requires valve kit to complete the faucet.
- Vandal-resistant aerator.
- 6" (152 mm) spout reach.
- Less drain.
- Safe Drinking Water Act (SDWA-Low Lead) compliant.
- On demand on and off. Valve kit is factory set to 30 second max. continual run cycle if it turned on continuously.

## Material

- Brass construction.

## Technology

- Valve kit has electronic Insight™ Sensor Technology for accurate and consistent activation.
- This trim set can be used with 11830-NA (Hybrid power) wall mount valve or 11843-NA (AC Power) wall mount valve.

## Installation

- Single-hole spout mounting. Please consider appropriate distance between spout and sensor.
- Below the counter valve for easy installation and maintenance.

## Required Products/Accessories

K-11830 Wall-mount Valve for Touchless Faucets

or

K-11843 Wall-mount Valve for Touchless Faucets



**ADA** **CSA B651** **OBC**

## Codes/Standards

ASME A112.18.1/CSA B125.1

NSF/ANSI 372

All applicable US Federal and State material regulations

DOE - Energy Policy Act 1992

California Energy Commission (CEC)

ADA

ICC/ANSI A117.1

CSA B651

OBC

## KOHLER® One-Year Limited Warranty

See website for detailed warranty information.

## Available Colors/Finishes

*Color tiles intended for reference only.*

Color	Code	Description
-------	------	-------------

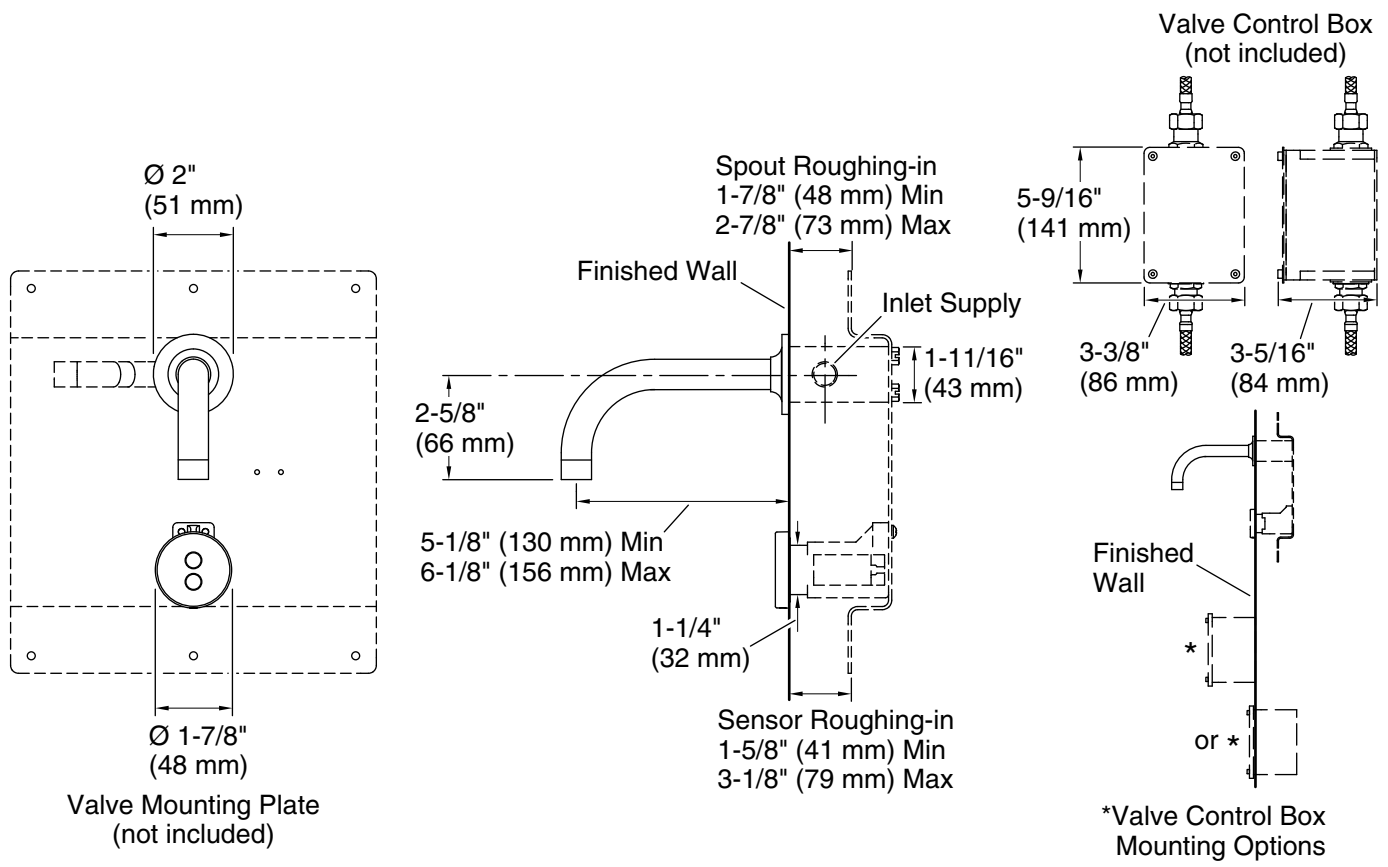
	CP	Polished Chrome
--	----	-----------------

# KOHLER Faucets

Wall-mount faucet trim w/Insight™ technology, no valve

**Purist®**

**K-T11841**



## Technical Information

All product dimensions are nominal.

## Notes

Install this product according to the installation guide.

The sensor roughing-in allows for installation to a back splash or thicker finished wall than the spout roughing-in.

ADA, OBC, CSA B651 compliant when installed to the specific requirements of these regulations.